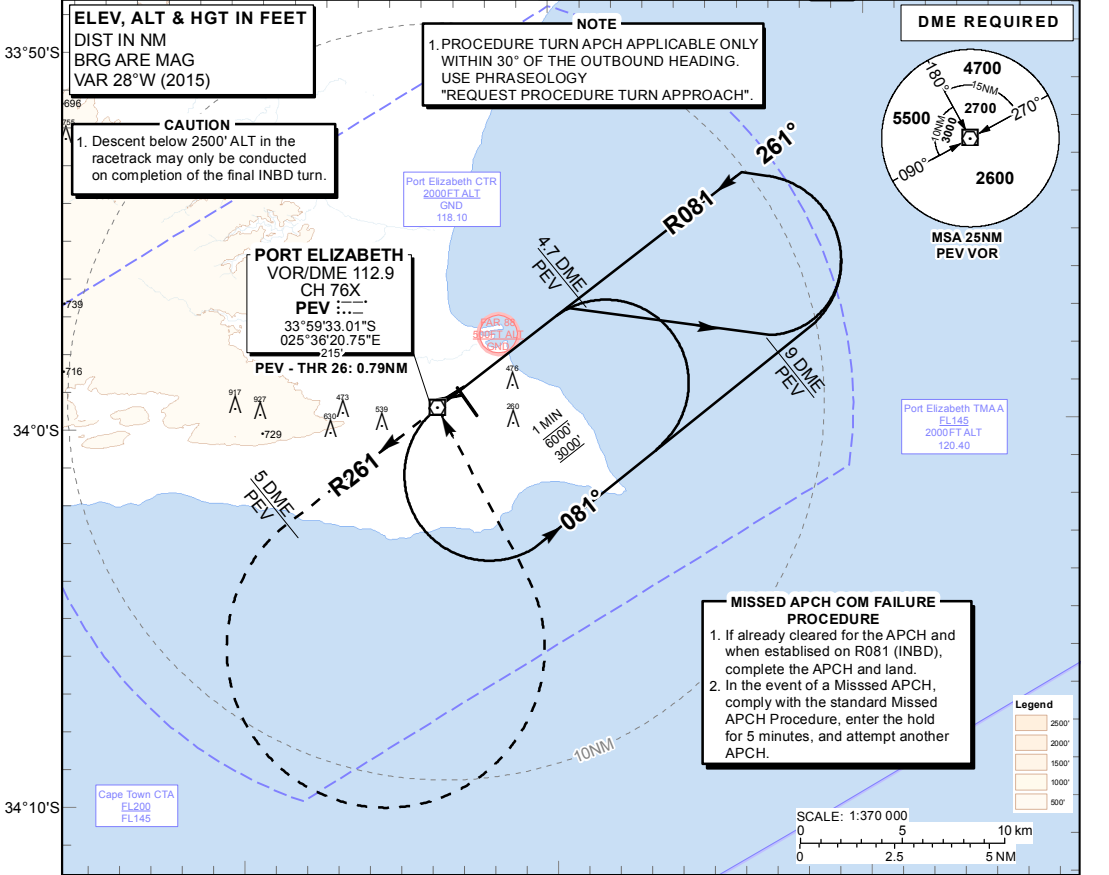


**INSTRUMENT APPROACH CHART - ICAO**

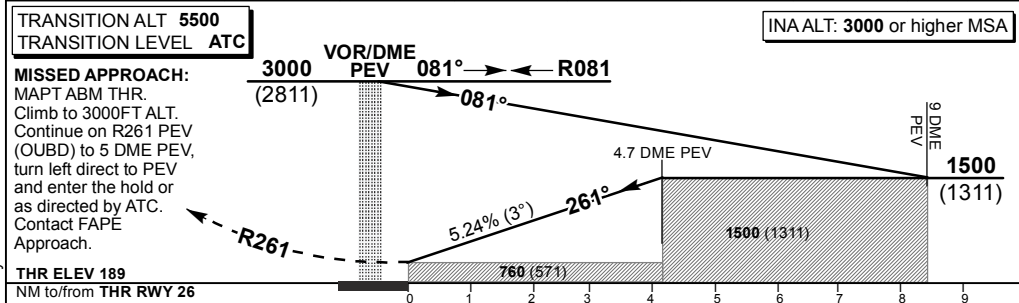
**AERODROME ELEV 229'**  
**HEIGHTS RELATED TO THR RWY 26 - ELEV 189'**

RADAR APP: 120.40  
 TWR: 118.10  
 CLEARANCE: 122.10  
 ATIS: 126.80

**PORT ELIZABETH INTL**  
**VOR Z RWY 26**  
 CAT A - D



	25°30'E	25°40'E	25°50'E	
<b>DIST (NM) to THR 26</b>	4.7	4	3	
<b>ADVISORY ALT(HGT)</b>	1500 (1311)	1270 (1081)	950 (761)	



CHANGE: Revised Advisory Altitudes

					<b>GS</b>	<b>KT</b>	80	100	120	140	160
<b>OCA (H)</b>	<b>A</b>	<b>B</b>	<b>C</b>	<b>D</b>	4.7DME PEV - THR	M:S	2:58	2:22	1:58	1:41	1:29
Straight-in Approach		760 (571)	760 (571)	760 (571)	Rate of descent	FPM	425	531	637	743	850
					<b>NOTE:</b> 1. RoD from 4.7 DME PEV computes at 5.24% (3.0°). 2. All circling approaches are entirely at the discretion of the pilot in command.						
Circling		890(661)	960(731)	1320(1091)	1390(1161)						